

# THERMADATA® STAINLESS STEEL PRO LOGGERS

- Integral USB interface for setup & download
- Auto PDF summary
- High temperature range -20 to 125 °C
- 6 probe options available

These ThermaData Stainless Steel Pro loggers are ideal for food, pharmaceutical and other applications where a high temperature data-logger is required. The Stainless Steel Pro is housed in a waterproof, food grade 316 stainless steel case to protect the logger from corrosion, impact and moisture (IP66/67).

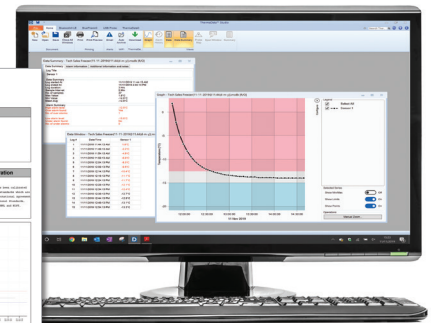
The ThermaData Studio software allows the user to programme the logging sample/interval rate (1 second to 255 minutes), the real-time clock, °C/°F, delayed start (maximum 23 hours, 59 minutes), software start, temperature start or time start and a 31-character user ID. The user can also set high and low alarm values for a specific application.

The Stainless Steel Pro is available in five options; without a probe, with a Ø3.3 x 50 mm penetration probe, a Ø4.5 x 100 mm, Ø4.5 x 150 mm, Ø4.5 x 200 mm penetration probe all with a Ø3.3 reduced tip. In addition to the five standard options there is also a Ø1.8 x 20 mm fast response probe variant which is ideal for applications which require a fast ambient reading ie. Dishwashers. Each logger is supplied with a one metre USB-C lead.

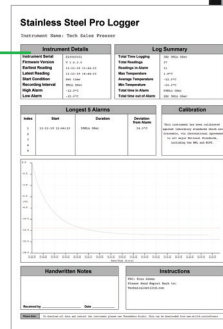


## THERMADATA STUDIO SOFTWARE & AUTOMATIC PDF FILE OUTPUT

The ThermaData Studio software is supplied as a FREE download. The Stainless Steel Pro logger is connected to a PC via a USB-C port lead and by selecting the relevant icon the data can be downloaded and displayed either as a graph, table or summary. The information can then be analysed by zooming in, saving as a Studio File or exporting to other software packages. The Stainless Steel Pro logger produces a report automatically on computer plug-in, this report will detail high and low alarms and also give you various key information for acceptance for deliveries or processes. No software required to download PDF report.



### Example of PDF file



- **USB connection point**  
Simply unscrew the end cap to access the USB-C connector. Using the supplied USB-C lead this allows the user to connect the logger to a PC and upload any data collected.

REMOTE MONITORING



Order code	Description
294-900	Stainless steel logger - without probe
294-940	Stainless steel logger - 20 mm FR probe
294-930	Stainless steel logger - 50 mm probe
294-931	Stainless steel logger - 100 mm probe
294-932	Stainless steel logger - 150 mm probe
294-933	Stainless steel logger - 200 mm probe

Supplied with a one metre USB-C lead

Specification	ThermaData Stainless Steel Pro
Range	-20 to 125 °C
Resolution	0.1 °C
Accuracy	±0.5 °C
Memory	16,000 temperature readings
Sample rate	1 second to 255 minutes
Battery	3.6 volt 2/3 AA lithium
Battery life	3 years (based on 6 sec sample rate)
Dimensions	Ø22.5 x 129 mm (excluding probe)
Weight	170 grams - model dependant