



# TagTemp Stick

## TEMPERATURE LOGGER – INSTRUCTIONS MANUAL V1.0x H

### 1 INTRODUCTION

**TagTemp Stick** is an electronic temperature recorder. A sensor measures the temperature and the read value is stored in memory. This data can later be downloaded to a computer for display and analysis in the form of tables or charts.

The **NXperience** and the **LogChart II** configurator software are the tools used to configure the operating mode and to view the downloaded data. Parameters such as start and end times of logs and log interval, for example, are easily defined through the **NXperience** and the **LogChart II** software.

Acquisitions can also be exported to be analyzed in other applications, such as spreadsheet programs.

#### 1.1 IDENTIFICATION

The identification label is on the device body. Check if the features described are in accordance with your order.

#### 1.2 STATUS INDICATOR

**Status indicator:** This visual indicator reports the status of operation of device through the number of flashes that occur in an interval of **five** seconds. The states of operation are:

- **One flash:** The device is waiting to start the log in memory (standby) or completed a series of logs in memory;
- **Two flashes:** The device is performing logs in memory;
- **Three flashes:** The device is or has gone through an alarm condition and is not performing logs in memory;
- **Four flashes:** The device is or has gone through an alarm condition and is performing logs in memory.

### 2 TECHNICAL DATA

<b>Measure Range</b>	Temperature: -20.0 °C (-4 °F) to 70.0 °C (158 °F).
<b>Accuracy</b>	± 0.5 °C @ 25 °C (± .9 °F @ 77 °F). ± 1 °C (± 1.8 °F) max. over the full measuring range. <b>Note:</b> A measure error can be fixed using the <b>OFFSET</b> parameter in the <b>NXperience</b> and the <b>LogChart II</b> software.
<b>Measurement response time (90 %)</b>	10 min. in still air.
<b>Measurement Resolutions</b>	Temperature: 0.1 °C (32.18 °F).
<b>Memory capacity</b>	32.000 (32 k) logs.
<b>Measurement Interval</b>	5 seconds min. 18 hours max.
<b>Supply</b>	3.0 V lithium battery (CR2032), built-in. <b>Non-replaceable and non-rechargeable.</b>
<b>Estimated battery autonomy</b>	<ul style="list-style-type: none"> <li>• More than 400 days – Sampling rate of 1 minute.</li> <li>• More than 500 days – Sampling rate of 30 minutes.</li> </ul>
<b>Operating temperature</b>	From 20.0 °C (-4 °F) to 70.0 °C (158 °F).
<b>Housing</b>	Polyamide
<b>Protection</b>	Product suitable for applications requiring up to <b>IP67</b> degree of protection. See chapter "Special Care".
<b>Dimensions</b>	78 x 23 x 11 mm
<b>Device -PC data transfer time</b>	Proportional to the number of records. 20 seconds to 32.000 records.
<b>PC Interface</b>	Connector USB
<b>NXperience software operation environment</b>	Configurator software for Windows ® 10, 8, 7 and XP. Menus in Portuguese, English, French or Spanish. Sets up, reads and displays data on the screen.
<b>LogChart II software operation environment</b>	Configurator software for Windows ® 8, 7 and XP. Menus in Portuguese, English, Spanish or French. Sets up, reads and displays data on the screen.

### 3 OPERATION

It is only possible to operate the device after the **NXperience** or the **LogChart II** software are installed to a PC, according to the steps described in the [NXPERIENCE SOFTWARE](#) and the [LOGCHART II SOFTWARE](#) chapters of this manual. The communication between device and PC is performed with the aid of the USB-A connector.

The device operation mode set up is defined in advance by using the **NXperience** or the **LogChart II** software. Each setting must be defined and the consequences observed.

The device starts and stops registering as defined in settings.

### 4 NXPERIENCE SOFTWARE

#### 4.1 INSTALLING NXPERIENCE

**NXperience** software allows you to explore all the features of the device by communicating through its USB interface. It is also a complete tool to perform the analysis of the data logged by **TagTemp Stick**.

To install **NXperience**, just execute the *NxSoftwareSetup.exe* file, available from our website.

#### 4.2 RUNNING NXPERIENCE

When you open **NXperience**, the main window is displayed:

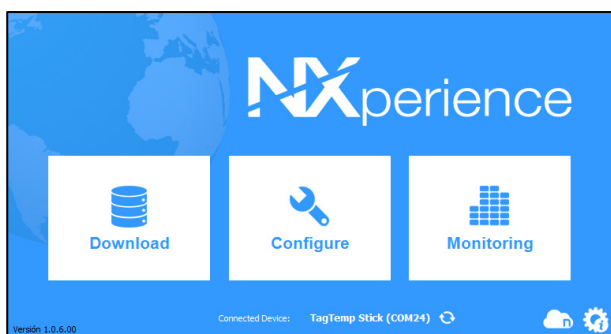


Fig. 01 – NXperience main window

#### 4.3 CONFIGURING THE DEVICE

For device configuration is necessary that the device is connected to the computer. See Fig. 11.

Once connected, you must run **NXperience** and click **Configure**, and then click on **Read Device**.

##### 4.3.1 GENERAL PARAMETERS

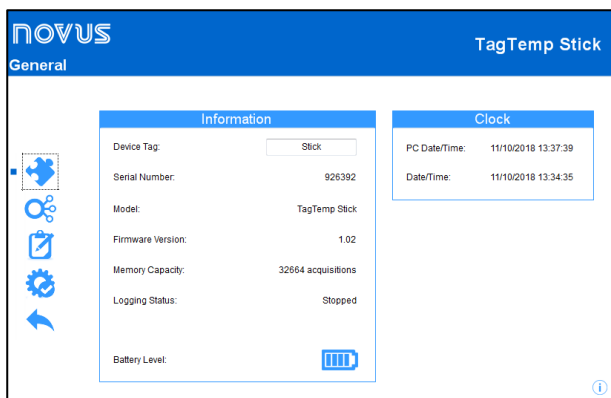


Fig. 02 – General parameters

#### INFORMATION

- **Device Tag:** Allows you to set a name, which will be used as channel identification during a download, for the digital channel. The field accepts up to 16 characters.
- **Serial Number:** Shows the device unique identification number.
- **Model:** Shows the device model name.
- **Firmware Version:** Shows the firmware version recorded in the device.
- **Memory Space:** Shows memory space still available for new logs.

- **Log Status:** Informs if the device is registering or not.
- **Battery Level:** Shows the device's battery charge level.

#### CLOCK

- **PC Date/Time:** Shows the date and time of the computer.
- **Date/Time:** Shows the date and time of the device when it was read by **NXperience**.

#### 4.3.2 CHANNELS PARAMETERS

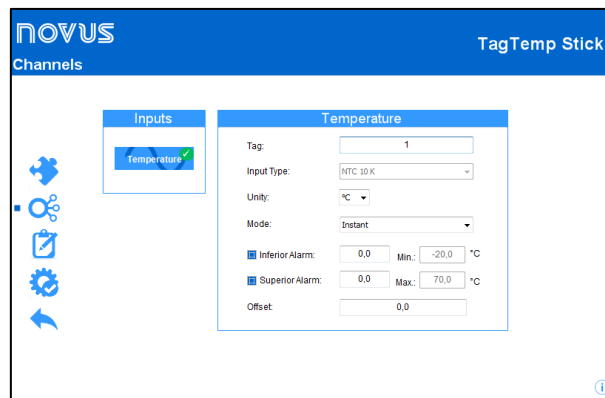


Fig. 03 – Channels parameters

#### TEMPERATURE

- **Tag:** Allows you to set a name, which will be used as channel identification during a download, for the channel. The field allows up to 16 characters.
- **Input Type:** Shows the type of sensor supported by the device.
- **Unit:** Allows you to define the unit of the value measured: °C or °F for channel 1 (temperature).
- **Mode:** It defines how the value measured will be registered. Options are:
  - **Instant:** The value logged will be exactly the value measured at each interval defined. Measurement is taken at the end of the defined interval. The minimum interval between measurements is 5 seconds.
  - **Maximum:** The value logged will be the maximum value found within ten consecutive measurements taken within a predefined interval. The minimum interval between measurements is 50 seconds.
  - **Minimum:** The value logged will be the minimum value found within ten consecutive measurements taken within a predefined interval. The minimum interval between measurements is 50 seconds.
  - **Medium:** The registered value will be the average of ten measurements made on log interval. The minimum time between each record is 50 seconds.
- **Lower Alarm:** Allows you to enable and configure a lower alarm setpoint.
  - **Minimum:** Displays the minimum temperature supported by the device.
- **Upper Alarm:** Allows you to enable and configure a higher alarm setpoint.
  - **Maximum:** Displays the maximum temperature supported by the device.
- **Lower Setpoint:** When the measured temperature is lower than the value set in this parameter, the device will start the logs (option available only if the log Start Mode is set to "Setpoint").
  - **Minimum:** Displays the minimum temperature supported by the device.
- **Upper Setpoint:** When the measured temperature is higher than the value set in this parameter, the device will start the logs (option available only if the log Start Mode is set to "Setpoint").
  - **Maximum:** Displays the maximum temperature supported by the device.
- **Offset:** Allows you to make small adjustments to the channel readings. The configured offset will be added to all readings performed. An offset up to  $\pm 3$  °C ( $\pm 5.4$  °F) can be set for temperature setting. This allows to decrease (and even zero) the temperature measurement error.

### 4.3.3 CONFIGURATION OF LOG REGISTER

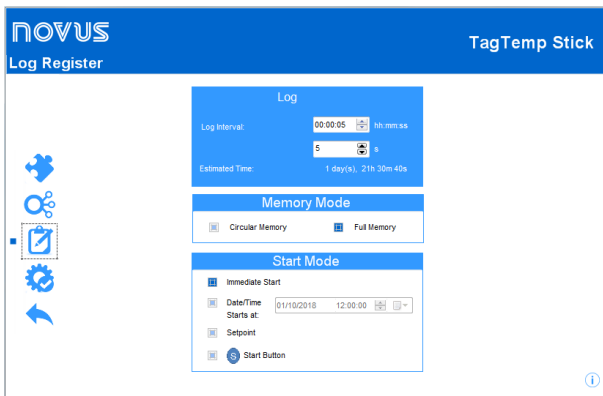


Fig. 04 – Configuration of log register


#### LOG

- **Log Interval:** Allows you to select the frequency (in hours, minutes or seconds) with which a log must be made and logged in the memory.
- **Estimated Time:** Based on the value set in the **Log Interval**, shows the estimated time for the memory to fill.

#### MEMORY MODE

- **Circular Memory:** Logs are continuous, replacing old logs with new ones as the number of logs overpasses the memory capacity.
- **Full Memory:** Logs can be stored up to the full memory capacity is reached.

#### START MODE

- **Immediately:** Start as soon as set up is ready and sent (OK) to the device.
- **Date:** Logs start at predefined date and time.
- **Setpoint:** Logs start when a certain temperature value is reached. In this option, the setpoint value is set in the **Channels** field, in the **Upper Setpoint** and **Lower Setpoint** parameters (these options appear only when this log mode is selected).
- **Start Button** : Starts and stops the logs by pressing for two seconds the Start/Stop button on the front of the recorder.

### 4.3.4 FINALIZATION

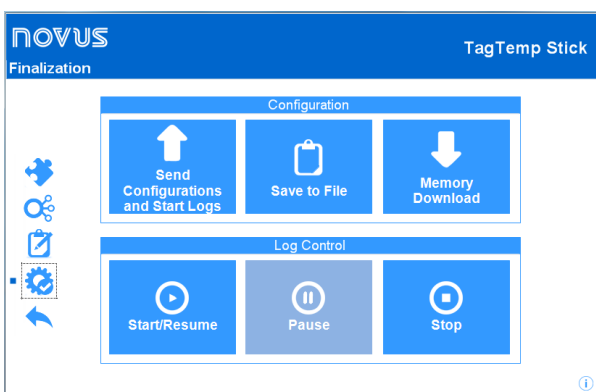


Fig. 05 – Finalization

### CONFIGURATION

- **Send Configurations and Start Logs:** Allows you to send the configuration to the device and start the logs.
- **Save to File:** Allows you to save the configuration to a file that can later be used.
- **Memory Download:** Allows you to download logs from memory.

### LOG CONTROL

- **Start:** Allows you to start or resume logs that have been interrupted by the **Pause** command, without discarding logs that are in the device's memory, using the configured parameters.
- **Pause:** Allows you to stop logs, allowing them to be resumed in the future using the **Start** button.
- **Stop:** Allows you to permanently stop logs, so that the device will only re-register when it receives a new configuration.

### 4.4 DOWNLOADING AND DATA VISUALIZATION

Data downloaded are send from device to PC.

Data can be downloaded any time: at the end of the registering process or while they are being acquired. If data download takes place during the registering process, **the process will not be interrupted**, following the device configuration.

#### 4.4.1 DOWNLOADING DATA

Data download is accomplished by clicking the button **Download Logs** in the **Download** screen from **NXperience**.

During data transference, a status bar indicates remaining data to be transferred. Data downloading time is proportional to the number of readings logged.

#### 4.4.2 VISUALIZING DATA

At the end of values transfer, the data will be displayed in a graphical form.

##### 4.4.2.1 CHART WINDOW

It is possible to select a region of the chart to zoom in. Zoom commands can be accessed through zoom icons from the task bar.

It is also possible to select an area from the chart to zoom in by clicking and dragging the mouse, thus creating a zoom region starting from the upper left corner on the chart area.

The graphic curves can be vertically dragged with a right-click and dragging the mouse up and down.

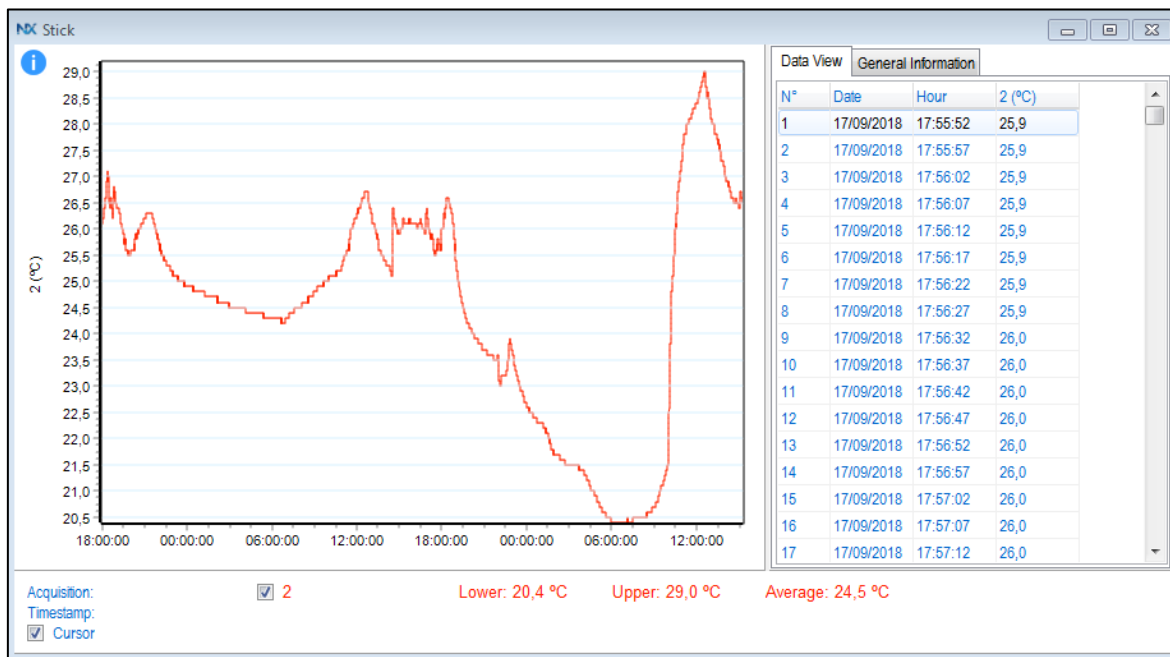


Fig. 06 – NXperience chart window

#### 4.4.2.2 DATA VIEW TABLE

Values are presented in a tabular form, listing the measurement time and value.

N°	Date	Hour	2 (°C)
1	17/09/2018	17:55:52	25,9
2	17/09/2018	17:55:57	25,9
3	17/09/2018	17:56:02	25,9
4	17/09/2018	17:56:07	25,9
5	17/09/2018	17:56:12	25,9
6	17/09/2018	17:56:17	25,9
7	17/09/2018	17:56:22	25,9
8	17/09/2018	17:56:27	25,9
9	17/09/2018	17:56:32	26,0
10	17/09/2018	17:56:37	26,0
11	17/09/2018	17:56:42	26,0
12	17/09/2018	17:56:47	26,0
13	17/09/2018	17:56:52	26,0
14	17/09/2018	17:56:57	26,0
15	17/09/2018	17:57:02	26,0
16	17/09/2018	17:57:07	26,0
17	17/09/2018	17:57:12	26,0

Fig. 07 – Data view table

#### 4.4.2.3 GENERAL INFORMATION TABLE

This window shows some information about the device whose data were just read and its configuration.

Property	Value
Data Logger	TagTemp Stick
Model	TagTemp Stick
Serial Number	926392
Firmware Version	1.02
Memory Capacity	32664 Samples
2 (°C)	
Input	NTC 10K
Mode	Instant
Offset	0,0
Lower Alarm	N/D
Upper Alarm	N/D
Download Information	
Title	Stick
Logging Interval	5 s
Total Loggings	32664
Loggings Start	Immediate Start
Memory Mode	Full Memory
Loggings Stop	Memory Mode
Time of Download	11/10/2018 15:28:19
First Log	17/09/2018 17:55:52

Fig. 08 – General information

#### 4.4.3 OTHER FEATURES

Check the **NXperience** Operations Manual for more information on the other features offered by the software, such as exporting to other formats, filter logs, chart junction, etc.

### 5 LOGCHART II SOFTWARE

#### 5.1 INSTALLING LOGCHART II

The **LogChart II** application is used to configure the parameters for data transfer.

To install the **LogChart II**, run the file **LC\_II\_Setup.exe** available on our website.

#### 5.2 RUNNING LOGCHART II

When you open **LogChart II**, the main window is displayed:

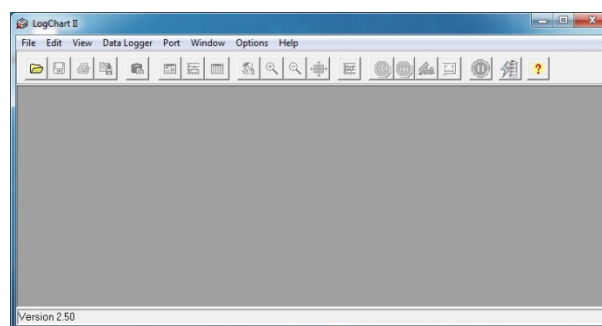


Fig. 09 – LogChart II main window

Next, select the serial port that the communication interface will use in the "Port" menu.

Check which serial is available. Usually COM2 is free, once the mouse uses COM1. The chosen port will be chosen by default next times the **LogChart II** is initiated.

When a valid port is selected, the icons below are displayed.



Fig. 10 – Icons enabled when the communication port selected is a valid port

### 5.3 CONFIGURING THE DEVICE

For device configuration is necessary that the communication interface is connected to the computer, using the selected port described in the previous section. See Fig. 11.



Fig. 11 – Communication via USB



After the serial port is selected, click on the button:

The **Parameters Configuration** screen is displayed. In this screen, the user can define the device operation mode and also obtains general information about the device.

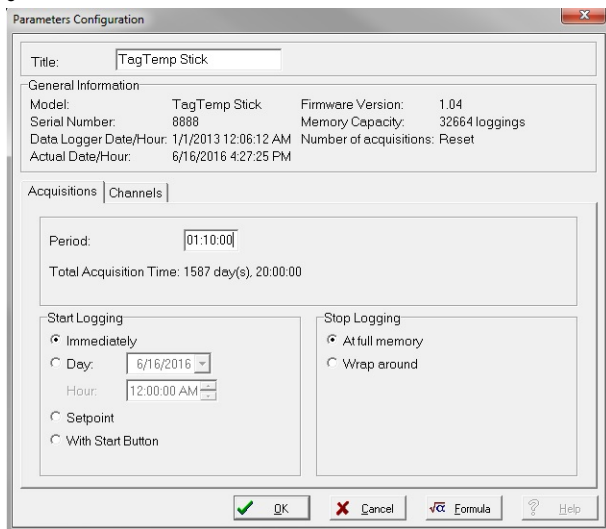


Fig. 12 – Configuration window

Fields are:

**1 - Title:** In this field, the user identifies the device by assigning it a name.

**2 - General information:** Area with information about the device, such as Model, Serial Number, device Date/Time, PC Date/Time, firmware version, memory capacity and number of acquisitions stored in memory.

In this field, time is constantly updated while the communication between device and computer is taking place.

**3 - Readings:** Presents a series of parameters that define the acquisition process.

**Interval:** Defines the interval between readings: The minimum interval is (5) seconds and maximum is (18) hours.

**Note:** When the type of value logged is minimum, maximum or average values, the minimum interval is 50 seconds.

**Estimated time:** In this parameter, the device informs the user how long it will take to occupy the full memory, in the conditions set up during configuration.

**Start of Readings:** Readings can be started in one of three different modes:

- **Immediately:** Start as soon as setup is ready and sent (OK) to the device.

- **Date:** Readings start at predefined date and time.
- **Setpoint:** Acquisitions start when a **temperature** setpoint is reached. In this option, the setpoint value is defined in the **Channels** field, where the **Alarm** parameter is replaced by setpoint.
- **By Button Start/Stop:** Starts and stops the logs by pressing for two seconds the Start/Stop button on the front of the recorder.

**Stop loggings:** Options for the end of readings are:

- **Full Memory:** Readings can be stored up to the full memory capacity is reached.
- **Don't stop (Wrap around):** Readings are continuous, replacing old records with new ones as the number of readings overpass the memory capacity.

**4 - Channels:** Displays other parameters related to temperature measurement:

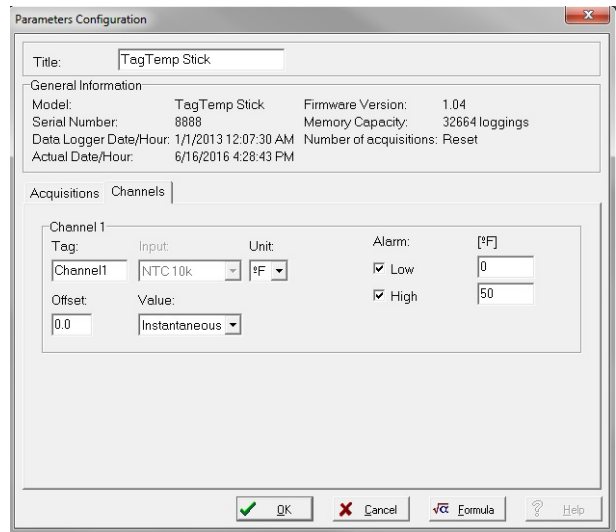


Fig. 13 – Configuration window

**Unit:** Defines the unit of the value measured: °C or °F for channel 1 (temperature).

**Value:** It defines how the value measured will be registered. Options are:

- **Instantaneous:** The value logged will be exactly the value measured at each interval defined. Measurement is taken at the end of the defined interval. The minimum interval between measurements is 5 seconds.
- **Average:** The registered value will be the average of ten measurements made on log interval. The minimum time between each record is 50 seconds.
- **Maximum:** The value logged will be the maximum value found within ten consecutive measurements taken within a predefined interval. The minimum interval between measurements is 50 seconds.
- **Minimum:** The value logged will be the minimum value found within ten consecutive measurements taken within a predefined interval. The minimum interval between measurements is 50 seconds.

**Offset:** Makes possible to correct the value logged.

**Alarm:** Defines limit values that, when exceeded, characterize an alarm condition. Alarm events are informed to the user through a flashing mode of the **Alarm Indicator**.

After filling all the fields, select "OK" and settings will be sent to the device.

### 5.4 STOP / PAUSE / RESUME BUTTONS

These buttons will be enabled once the device is fully configured.

**Stop:** The **Stop** button allows you to stop records permanently, so that the device will only register again after a new configuration by the user.



The **Pause / Resume** button action sends the appropriate command, depending on the current registration status:

If the records are **In Progress** and pressing this button, it will be send a command to **Pause** the records.



**Pause:** The **Pause** button allows you to stop registering, allowing them to be resumed in the future using the **Continue** button.

If registration is **Paused** and pressing this button, it will be send a command to **Resume** the logs.



**Start:** Resumes the logs that were interrupted by the **Pause** command, without erasing the previous logs of the device memory, using the same parameter settings previously configured.

### 5.5 OFFLOADING AND DATA VISUALIZATION

Data downloaded are send from device to PC.

Data can be downloaded any time: at the end of the registering process or while they are being acquired. If data download takes

place during the registering process, **the process will not be interrupted**, following the device configuration.

#### 5.5.1 OFFLOADING DATA

Data download is accomplished by clicking the button **Offload Data**:



During data transference, a status bar indicates remaining data to be transferred. Data downloading time is proportional to the number of readings logged.

#### 5.5.2 VISUALIZING DATA

At the end of values transfer, data can be displayed in a graphical form.

##### 5.5.2.1 CHART WINDOW

It is possible to select a region of the chart to zoom in. Zoom commands can be accessed through the *View* menu or through zoom icons from the task bar.

It is also possible to select an area from the chart to zoom in by clicking and dragging the mouse, thus creating a zoom region starting from the upper left corner on the chart area.

The graphic curves can be vertically dragged with a right-click and dragging the mouse up and down.

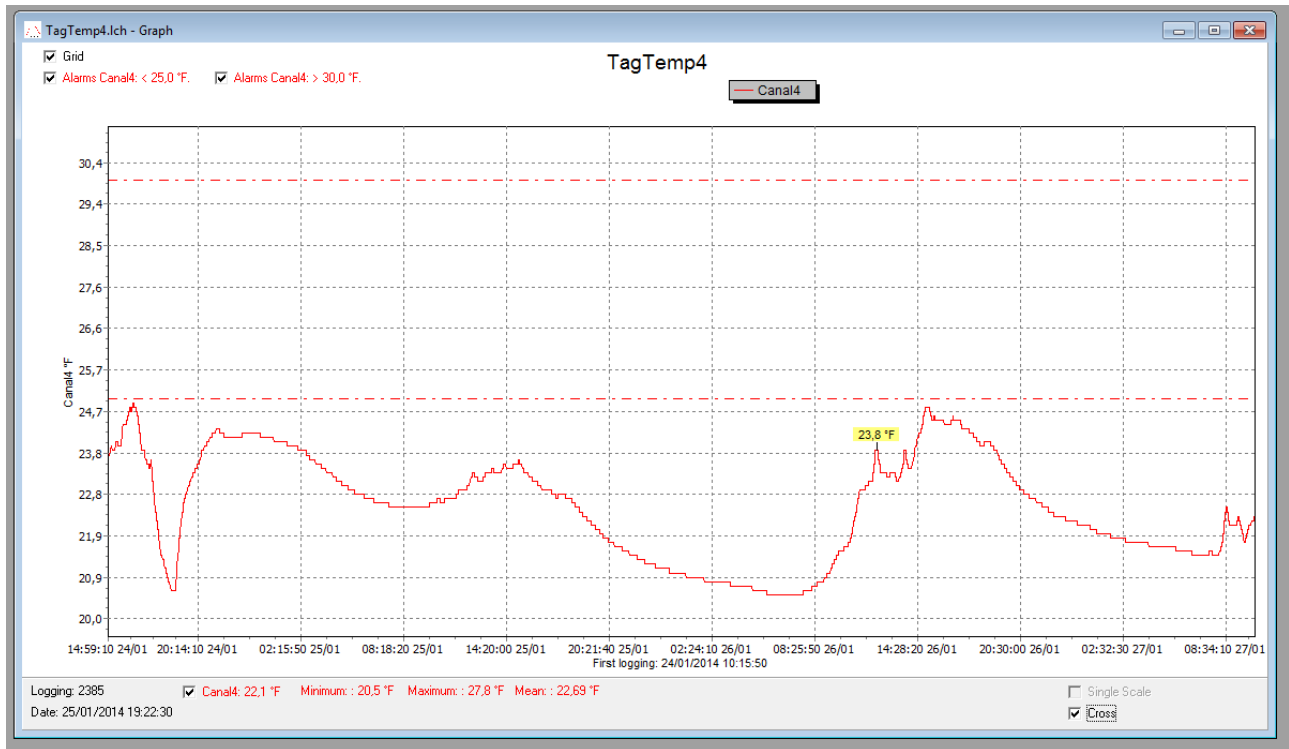


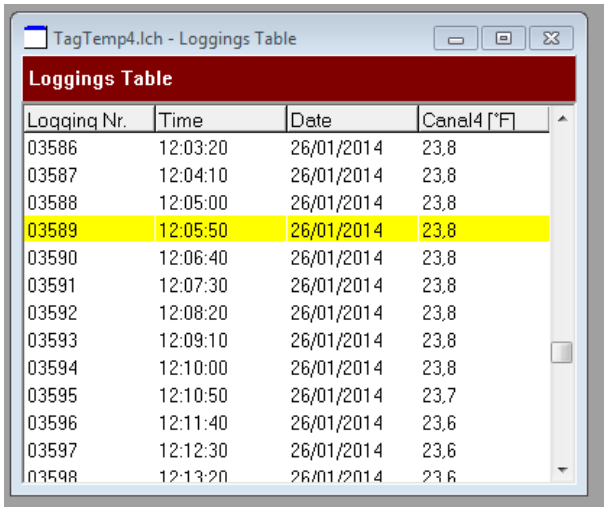
Fig. 14 – LogChart II Chart window

### 5.5.2.2 MEASURES TABLE WINDOW

To display measurements in a tabular form, press the icon **Table**



Values are presented in a tabular form, listing the measurement time and value.



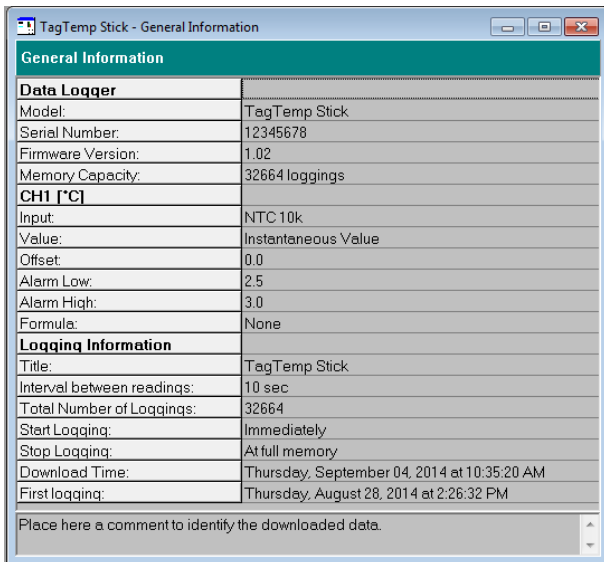
Logqing Nr.	Time	Date	Canal4 [°F]
03586	12:03:20	26/01/2014	23.8
03587	12:04:10	26/01/2014	23.8
03588	12:05:00	26/01/2014	23.8
03589	12:05:50	26/01/2014	23.8
03590	12:06:40	26/01/2014	23.8
03591	12:07:30	26/01/2014	23.8
03592	12:08:20	26/01/2014	23.8
03593	12:09:10	26/01/2014	23.8
03594	12:10:00	26/01/2014	23.8
03595	12:10:50	26/01/2014	23.7
03596	12:11:40	26/01/2014	23.6
03597	12:12:30	26/01/2014	23.6
03598	12:13:20	26/01/2014	23.6

Fig. 15 – Screenshot showing the measurement table

### 5.5.2.3 GENERAL INFORMATION TABLE

This window shows some information about the device whose data were just read and its configuration.


The screen can be displayed by pressing the icon **Parameter**


General Information	
<b>Data Logger</b>	
Model:	TagTemp Stick
Serial Number:	12345678
Firmware Version:	1.02
Memory Capacity:	32664 loggings
<b>CHI [°C]</b>	
Input:	NTC 10k
Value:	Instantaneous Value
Offset:	0.0
Alarm Low:	2.5
Alarm High:	3.0
Formula:	None
<b>Logqing Information</b>	
Title:	TagTemp Stick
Interval between readings:	10 sec
Total Number of Loggings:	32664
Start Logging:	Immediately
Stop Logging:	At full memory
Download Time:	Thursday, September 04, 2014 at 10:35:20 AM
First logging:	Thursday, August 28, 2014 at 2:26:32 PM
Place here a comment to identify the downloaded data.	

Fig. 16 – General information window

### 5.5.3 EXPORTING DATA

Logged data can be exported to different file formats for further analysis. To export, access File/Export or click the icon: 

### 5.5.4 EXPORTING THE DATA REGISTERED

**Battery Level:** Indicates the level of battery voltage .

**Device Status:** Summarizes the state of the device, including its memory, and the occurrence of alarm events to the time of the opening of the Diagnostic page.

## 6 MOST FREQUENTLY FOUND PROBLEMS

### The LED is not flashing

The LED flashing light is intentionally weak, and it can be difficult to see it in clear environments, certify it is really not flashing.

### Communication with the device fails

Make sure the COM port is selected correctly and there is no other program using the same port during communication attempts;

Make sure there is no physical obstacle blocking the infrared signal;

Make sure the port selected does not present any problem.

## 7 SPECIAL CARE

When handling the device and its battery, observe the following:

To achieve the IP67 protection degree the cover of **TagTemp Stick** should always be kept properly closed.

## 8 WARRANTY

Warranty conditions are available on our website [www.novusautomation.com/warranty](http://www.novusautomation.com/warranty).